

Fuel / Water Hose Routing

Schematic and Routing Diagram

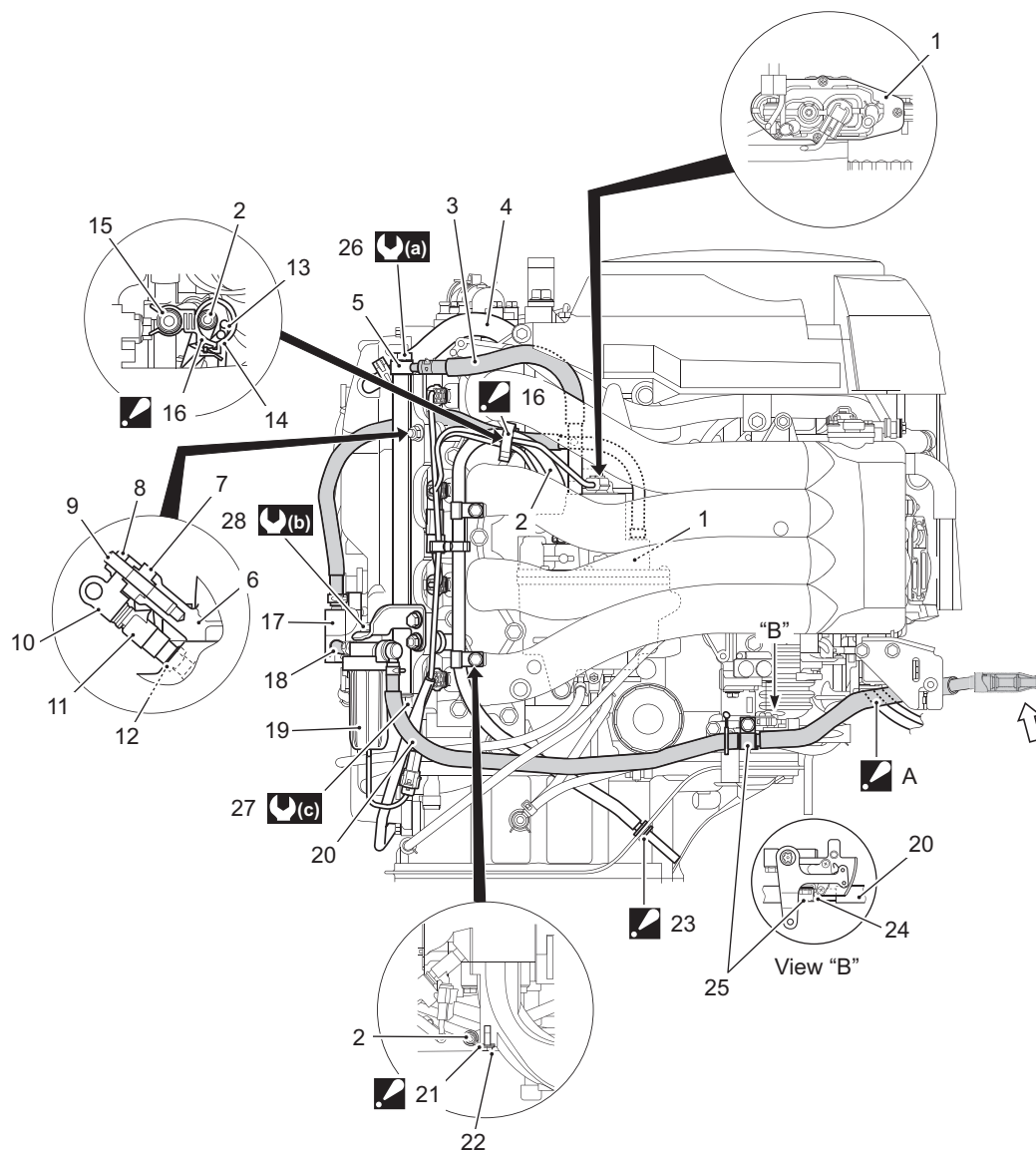
Fuel Hose Routing (2015/07)

CENGG2114202003

Applicable Model and Effective Serial Number:








10003F-610001 and later, 11503F-610001 and later, 11504F-610001 and later,
11503Z-610001 and later, 14003F-610001 and later, 14003Z-610001 and later.

Change on fuel hose (20) to low pressure fuel filter.



IGG211420001-02

4B-2 Fuel / Water Hose Routing:

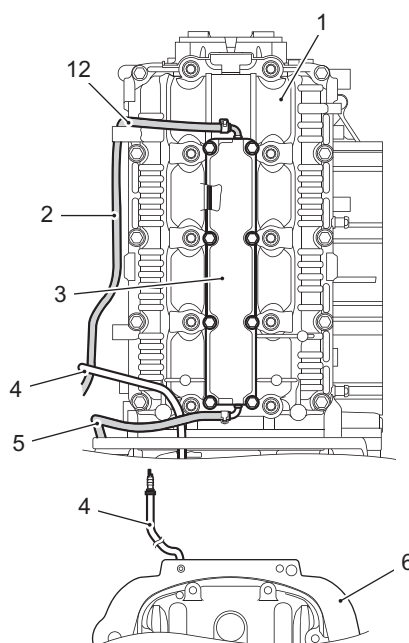
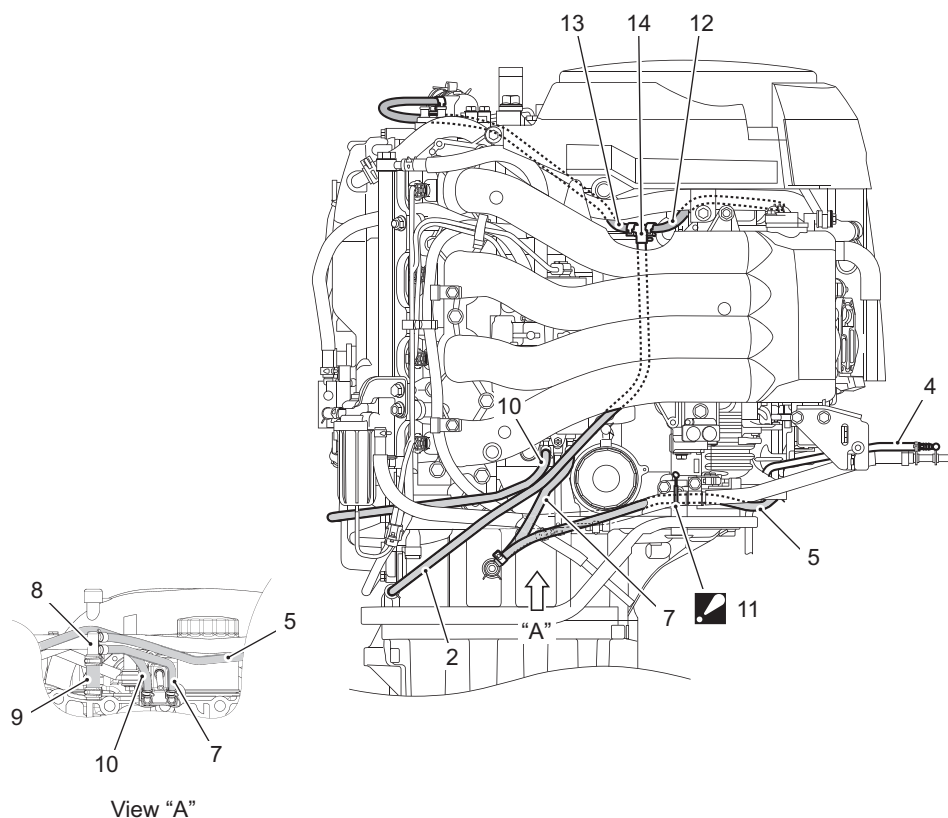
1. Fuel vapor separator	17. Low pressure fuel pump
2. Evaporation hose	18. Fuel hose (Low pressure fuel filter to low pressure fuel pump)
3. Fuel hose (Fuel vapor separator to fuel delivery pipe)	19. Low pressure fuel filter
4. Breather hose	20. Fuel hose (Joint to low pressure fuel filter)
5. Fuel main joint (E40)/Fuel hose union (Others)	 21. Clamp : Clamp evaporation hose (2) as shown.
6. Intake manifold	22. Bolt
7. Insulator	 23. Cushion : Set the evaporation hose end 50 – 70 mm (2.0 – 2.7 in) out from cushion.
8. Nut	24. Paint mark (White)
9. Stud bolt	25. Clamp
10. Fuel delivery pipe	26. Union bolt
11. Fuel injector	27. Fuel delivery pipe plug
12. Cushion	28. Fuel filter nut
13. High pressure fuel pump lead wire	 A: Route the fuel hose (Joint to low pressure fuel filter) above the starter motor cable.
14. Knock sensor lead wire (DF115A/140A)	 (a) : 35 N·m (3.5 kgf-m, 25.5 lb-ft)
15. Fuel hose (Low pressure fuel pump to fuel vapor separator)	 (b) : 10 N·m (1.0 kgf-m, 7.0 lb-ft)
 16. Clamp : Clamp the hose (2), lead wires (13) and (14) (DF115A/140A) to keep them off from intake manifold.	 (c) : 35 N·m (3.5 kgf-m, 25.5 lb-ft)

Water Hose Routing (2015/07)

CENGG2114202004

Applicable Model and Effective Serial Number:

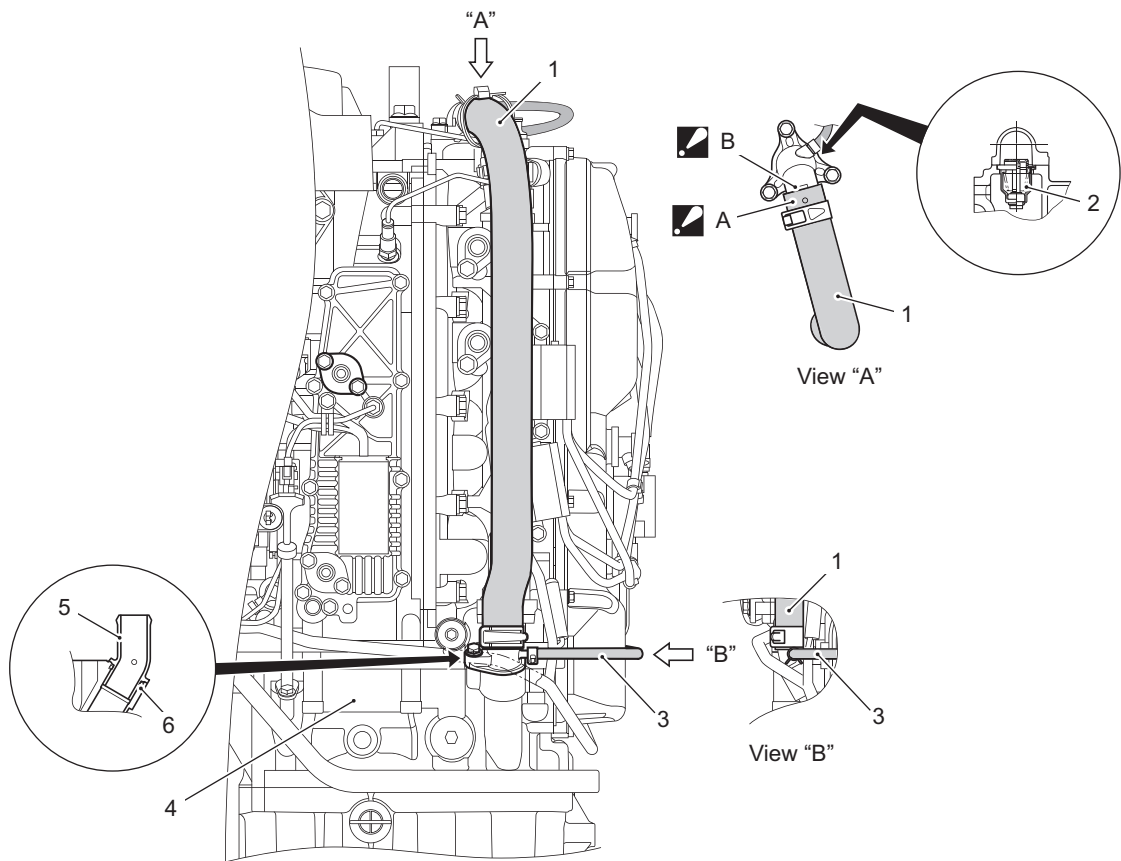
10003F-610001 and later, 11503F-610001 and later, 11504F-610001 and later,
11503Z-610001 and later, 14003F-610001 and later, 14003Z-610001 and later.





IGG211420002-04

1. Crankcase	8. 3-way joint No.1
2. Water hose (3-way joint No.2 to engine holder)	9. Water hose (Engine holder to 3-way joint No.1)
3. Crankcase water jacket cover	10. Water hose (Fuel vapor separator to engine holder)
4. Speedometer hose	11. Clamp : Clamp the fuel hose and water hose (5) together.
5. Water hose (3-way joint No.1 to crankcase)	12. Water hose (Crankcase to 3-way joint No.2)
6. Side cover seal	13. Water hose (3-way joint No.2 to thermostat cover)
7. Water hose (3-way joint No.1 to fuel vapor separator)	14. 3-way joint No.2

4B-4 Fuel / Water Hose Routing:



IGG211420003-02

1. Water return hose	5. Water return hose union
2. Thermostat	6. O-ring
3. Water hose (Fuel vapor separator to engine holder)	 A: Assemble the water return hose with the paint marking facing upward.
4. Engine holder	 B: Securely insert the water return hose until the stopper.