

Section 2

Mid Unit

CONTENTS

NOTE

For the items with asterisk (*) in the “CONTENTS” below, refer to the same section of the service manual mentioned in the “FOREWORD” of this manual.

Precautions	2-*	Engine Holder / Oil Pan / Driveshaft Housing	
Precautions.....	2-*	/ Mounts Components (DF40AST/60A/ATH	
Precaution for Mid Unit	2-*	2012/09)	2A-*
Housing and Bracket.....	2A-1	Engine Holder / Oil Pan / Driveshaft Housing	
Precautions.....	2A-*	/ Mounts Disassembly (DF40A/50A/	
Precaution for Housing and Bracket	2A-*	DF60AQH)	2A-*
Service Instructions.....	2A-1	Engine Holder / Oil Pan / Driveshaft Housing	
Lower Side Cover Components	2A-*	/ Mounts Disassembly (DF40AST/60A/ATH	
Lower Side Cover Removal and Installation	2A-*	2012/09)	2A-*
Tiller Handle Removal and Installation (TH		Engine Holder / Oil Pan / Driveshaft Housing	
model)	2A-*	/ Mounts Disassembly (DF40AST/60A/ATH	
Tiller Handle Removal and Installation (2012/		2012/09)	2A-*
09)	2A-*	Engine Holder / Oil Pan / Driveshaft Housing	
Tiller Handle Component	2A-*	/ Mounts Assembly (DF40A/50A/DF60AQH)	2A-*
Tiller Handle Components (2012/09)	2A-*	Engine Holder / Oil Pan / Driveshaft Housing	
Tiller Handle Disassembly and Assembly	2A-*	/ Mounts Assembly (DF40AST/60A/ATH	
Tiller Handle Disassembly and Assembly		2012/09)	2A-*
(2012/09)	2A-*	Engine Holder / Oil Pan / Driveshaft Housing	
Tiller Handle Angle Adjustment (2012/09)	2A-*	/ Mounts Related Component Inspection	
Engine Holder / Oil Pan / Driveshaft Housing		(DF40A/50A/DF60AQH)	2A-*
/ Mounts Components	2A-*	Clamp / Swivel / Steering Brackets	
Engine Holder / Oil Pan / Driveshaft Housing		Components (DF40A/50A/DF60AQH)	2A-*
/ Mounts Disassembly	2A-*	Clamp / Swivel / Steering Brackets	
Engine Holder / Oil Pan / Driveshaft Housing		Components (DF40AQH/50ATH/60AQH	
/ Mounts Assembly	2A-*	2012/09)	2A-*
Engine Holder / Oil Pan / Driveshaft Housing		Clamp / Swivel / Steering Brackets	
/ Mounts Related Component Inspection	2A-*	Disassembly (DF40A/50A/DF60AQH)	2A-*
Clamp / Swivel / Steering Brackets		Clamp / Swivel / Steering Brackets Assembly	
Components	2A-*	(DF40A/50A/DF60AQH)	2A-*
Engine Holder / Oil Pan /Driveshaft Housing /		Clamp / Swivel / Steering Brackets Related	
Mounts Components (DF50AV/60AV 2013/		Components Inspection (DF40A/50A/	
05)	2A-1	DF60AQH)	2A-*
Clamp / Swivel / Steering Brackets		Gas Cylinder Removal and Installation	
Components (DF50AV/ 60AV 2013/05)	2A-4	(DF40AQH/60AQH)	2A-*
Clamp / Swivel / Steering Brackets		Gas Cylinder Related Items Inspection	
Disassembly	2A-*	(DF40AQH/60AQH)	2A-*
Clamp / Swivel / Steering Brackets Assembly	2A-*	Steering Friction Adjuster Disassembly and	
Clamp / Swivel / Steering Brackets Related		Assembly (DF40AQH/50ATH/60AQH)	2A-*
Components Inspection	2A-*	Steering Friction Adjuster Disassembly and	
Engine Holder / Oil Pan / Driveshaft Housing		Assembly (DF40AQH/50ATH/60AQH 2012/	
/ Mounts Components (DF40A/50A/		09)	2A-*
DF60AQH)	2A-*	Power Trim and Tilt	2B-1
		Precautions.....	2B-*
		Precaution for Power Trim and Tilt.....	2B-*
		General Description	2B-1
		Power Trim and Tilt Description	2B-*

2-ii Table of Contents

Power Trim and Tilt Description (DF50AV/ 60AV 2013/05)	2B-1	Power Trim and Tilt Unit Removal and Installation	2B-*
Principles of Power Trim and Tilt Operation Description	2B-*	Power Trim and Tilt Unit Removal and Installation (DF40A/50A)	2B-*
Schematic and Routing Diagram	2B-*	Power Trim and Tilt Unit Components	2B-*
Power Trim and Tilt System Diagram	2B-*	Power Trim and Tilt Unit Components (DF50AV/60AV 2013/05)	2B-2
Diagnostic Information and Procedures	2B-*	Power Trim and Tilt Unit Disassembly	2B-*
Diagnose PTT System Malfunction	2B-*	Power Trim and Tilt Unit Reassembly	2B-*
Service Instructions	2B-2	Power Trim and Tilt Unit Components Cleaning and Inspecting	2B-*
Checking PTT Fluid Level	2B-*	Power Trim and Tilt Motor Removal and Installation	2B-*
Air Bleeding from PTT Unit	2B-*	Power Trim and Tilt Motor Disassembly and Assembly	2B-*
Setting of Trim Down Position Limit	2B-*	PTT Motor Related Items Inspection	2B-*
Setting of Trim Down Position Limit (DF40A/ 50A/60A)	2B-*	PTT Motor Relay Inspection	2B-*
Setting of Trim Down Position Limit (2012/09)	2B-*	PTT Switch Inspection	2B-*
Setting Tilt Up Limit Position	2B-*		
Setting Tilt Up Limit Position (DF40A/50A)	2B-*		
Setting Tilt Up Limit Position (2012/09)	2B-*		

Housing and Bracket

Service Instructions

Engine Holder / Oil Pan / Driveshaft Housing / Mounts Components (DF50AV/60AV 2013/05)

CENEJ6112106035

Applicable Model and Effective Serial Number:

05004F – 410001 and Later,

06003F – 410001 and Later.

NOTE

For details other than the following information of Engine Holder / Oil Pan / Driveshaft Housing / Mounts Components, refer to “Engine Holder / Oil Pan / Driveshaft Housing / Mounts Components” in related manual.

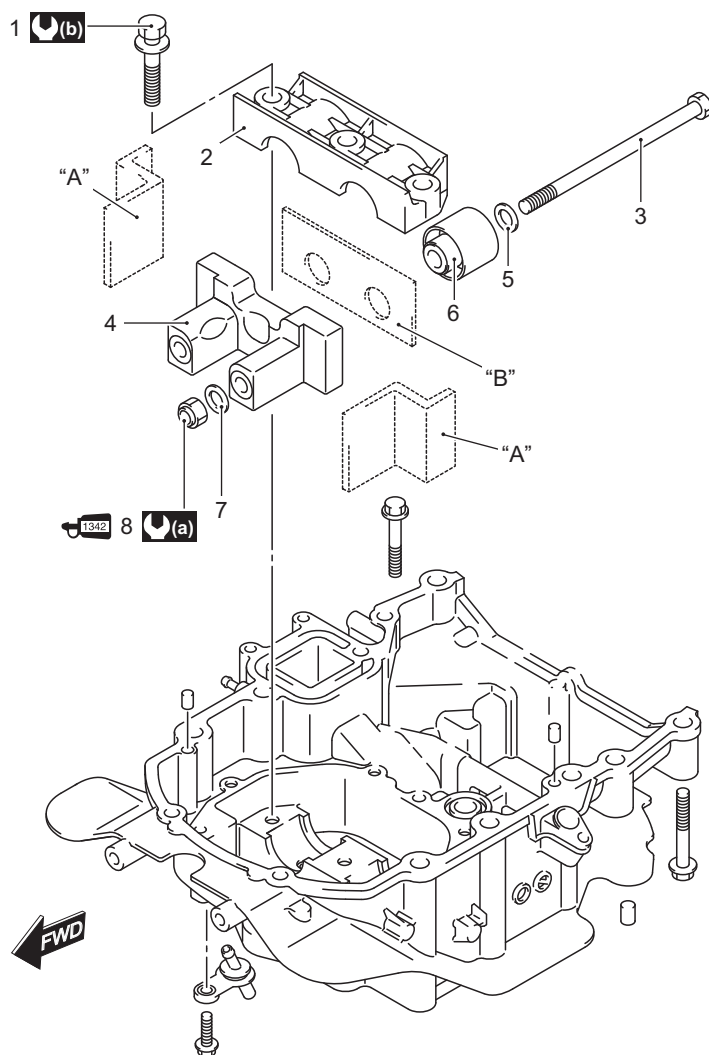
2A-2 Housing and Bracket:

The front upper thrust mount "A" and rear upper thrust mount "B" for DF50AVT/VTH/60AVT/VTH have not been used any longer.


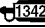

In accordance with this change, the upper thrust mount (4) has been changed in shape.

NOTE

The other upper mount component parts are the same one as DF60A of engine serial number 219999 and earlier.

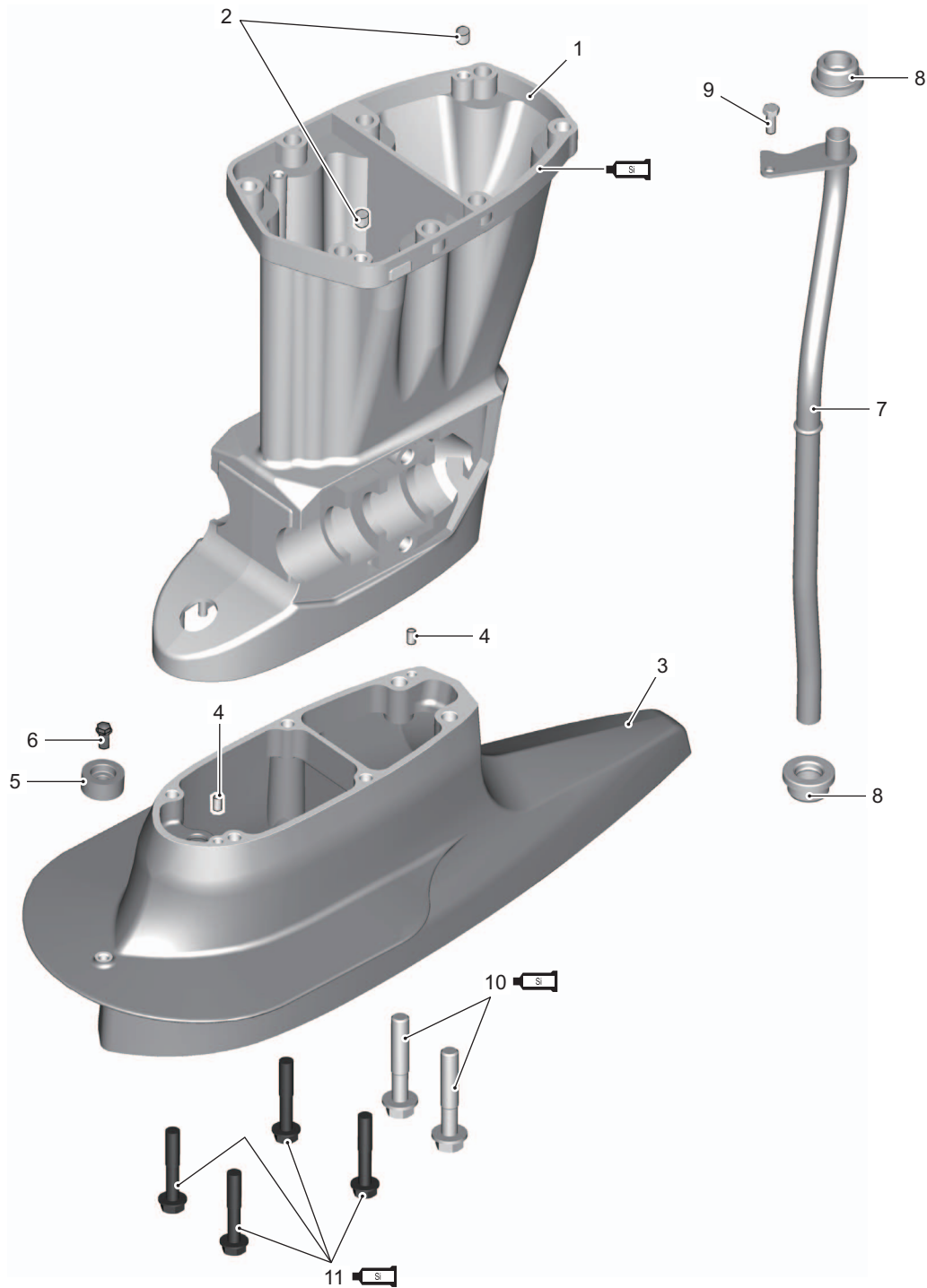


IEJ611210002-03

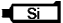
1. Bolt	4. Upper thrust mount	7. Washer	 : 50 N·m (5.0 kgf-m, 36.0 lbf-ft)
2. Upper mount cover	5. Washer	8. Nut	 : Apply SUZUKI Thread Lock 1342.
3. Upper mount bolt	6. Upper mount	 : 60 N·m (6.0 kgf-m, 43.4 lbf-ft)	

The driveshaft housing and extension case have been changed in shape to equip a large lower unit.
In accordance with this change, the water tube has been changed in shape.
The extension case bolt has been changed as follows.

	Early	Late
Extension case bolt	8 mm stud bolt (6 pcs)	8 mm bolt (4 pcs) 10 mm bolt (2 pcs)



IEJ611210003-05

1. Driveshaft housing	4. Dowel pin	7. Water tube	10. Bolt (10 mm)
2. Dowel pin	5. Anode	8. Grommet	11. Bolt (8 mm)
3. Extension case	6. Bolt	9. Bolt	 : Apply SUZUKI Silicon Seal

2A-4 Housing and Bracket:

Clamp / Swivel / Steering Brackets Components (DF50AV/ 60AV 2013/05)

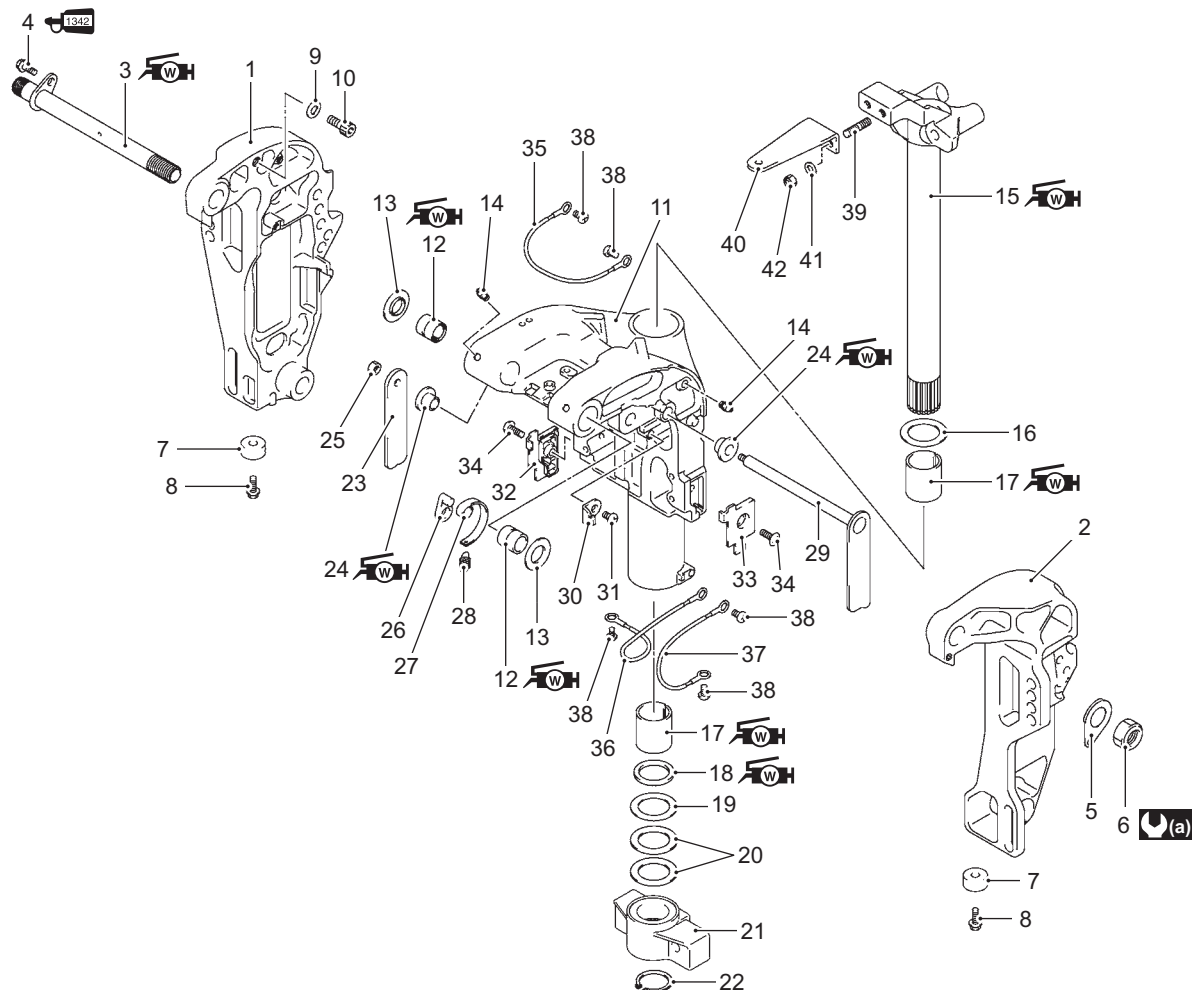
CENEJ6112106034

05004F – 410001 and Later, 06003F – 410001 and Later.

NOTE

For details other than the following information of Clamp / Swivel / Steering Brackets Components, refer to “Clamp / Swivel / Steering Brackets Components” in related manual.

The clamp bracket and swivel bracket component parts for DF50AVT/VTH/60AVT/VTH are the same as DF60AT/TH. The anodes have been changed.



IEJ611210001-03

1. Clamp bracket STBD	13. Washer	25. Nut	37. Bonding wire
2. Clamp bracket PORT	14. Grease nipple	26. Arm	38. Screw
3. Clamp bracket shaft	15. Steering bracket	27. Link	39. Bolt
4. Bolt	16. Washer	28. Spring	40. Steering bracket attachment
5. Washer	17. Bush	29. Tilt lock lever PORT	41. Washer
6. Nut	18. Seal	30. Bracket	42. Nut
7. Anode	19. Washer	31. Screw	(a) : 43 N-m (4.3 kgf-m, 31.0 lbf-ft)
8. Bolt	20. Shim	32. Plate STBD	WH : Apply SUZUKI Water Resistant Grease.
9. Washer	21. Lower mount bracket	33. Plate PORT	1342 : Apply SUZUKI Thread Lock 1342.
10. Bolt	22. Circlip	34. Screw	
11. Swivel bracket	23. Tilt lock lever	35. Bonding wire	
12. Bush	24. Bush	36. Bonding wire	

Power Trim and Tilt

General Description

Power Trim and Tilt Description (DF50AV/60AV 2013/05)

CENEJ6112201003

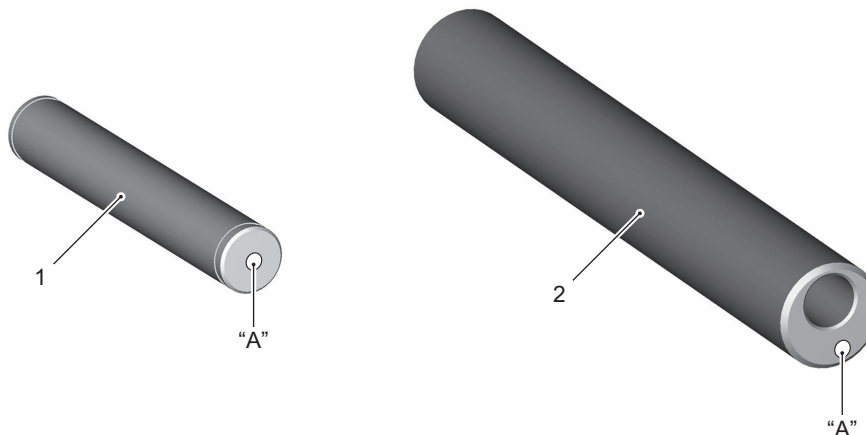
Applicable Model and Effective Serial Number:

05004F – 410001 and Later,

06003F – 410001 and Later.

In order to apply for higher propulsion, the PTT unit for the DF50AV/60AV has been changed to heavy duty type. The difference of the PTT unit between DF50AV/60AV and DF50A/60A.

- The valve opening pressure of thermal valve has been changed.
- The valve opening pressure of blow valve for up has been changed.
- The valve opening pressure of blow valve for down has been changed.
- The filter has been eliminated.
- The gear ratio of the pump has been changed.
- The upper bush has been changed in materials. The bush color has also been changed from white to black.
- The tilt cylinder upper and lower shafts have been changed and blue paint has been added on the shaft as an ID.



IEJ611220003-02

1. Tilt cylinder upper shaft	2. Tilt cylinder lower shaft	"A": ID mark: Blue paint
------------------------------	------------------------------	--------------------------

Service Instructions

Power Trim and Tilt Unit Components (DF50AV/60AV 2013/05)

CENEJ6112206020

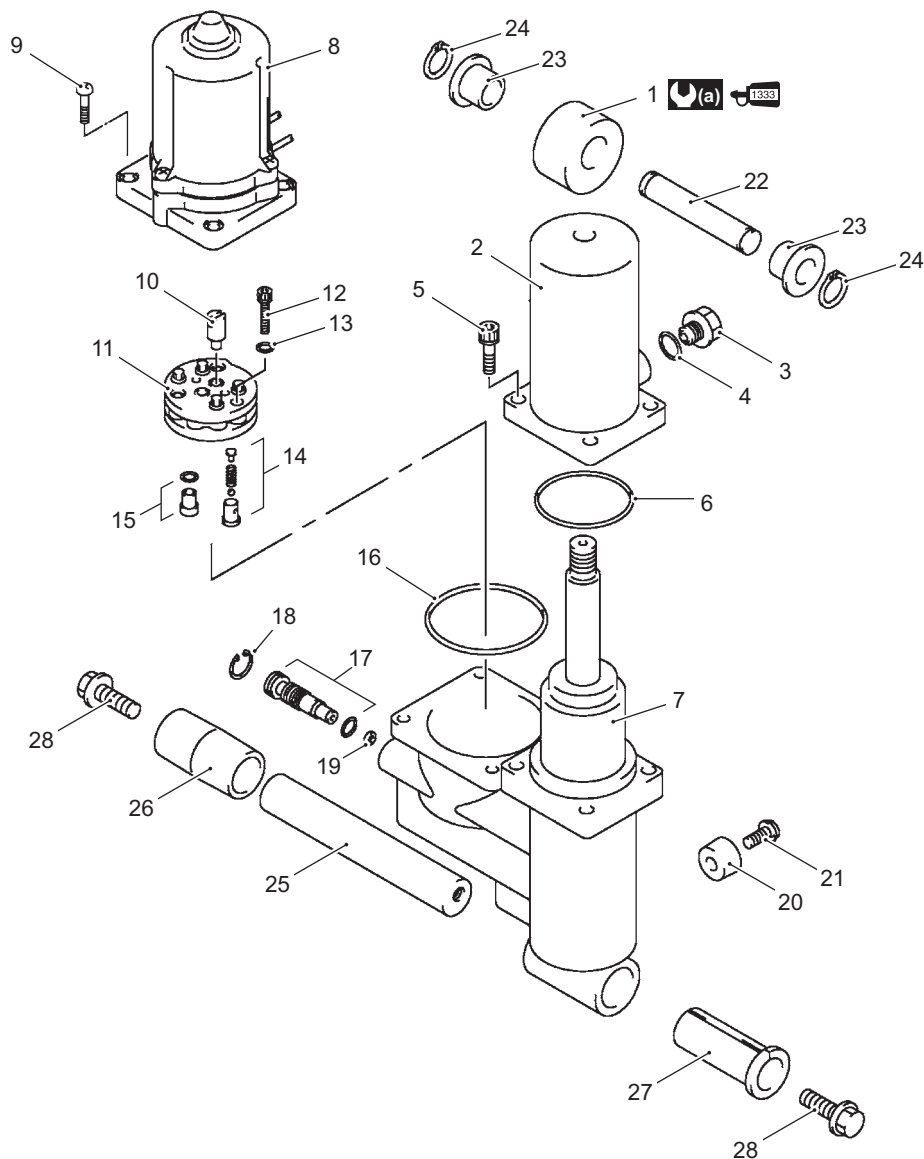
Applicable Model and Effective Serial Number:

05004F – 410001 and Later,

06003F – 410001 and Later.

NOTE

For details other than the following information of Power Trim and Tilt Components, refer to “Power Trim and Tilt Unit Components” in related manual.



IEJ611220001-04

1. Joint	9. Screw	17. Manual valve	25. Tilt cylinder lower shaft
2. Tank	10. Drive joint	18. Circlip	26. Collar
3. Plug	11. Gear pump	19. Seal washer	27. Bush
4. O-ring	12. Bolt	20. Anode	28. Bolt
5. Bolt	13. O-ring	21. Bolt	(a) : 45 N·m (4.5 kgf-m, 32.5 lbf-ft)
6. O-ring	14. Down pressure valve	22. Tilt cylinder upper shaft	: Apply thread lock to the thread area.
7. Manifold assembly	15. Up pressure valve	23. Bush	
8. PTT motor assembly	16. O-ring	24. E-ring	